



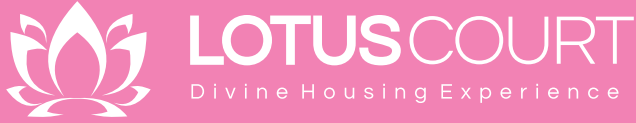
LOTUS COURT
Divine Housing Experience

DIVINE
HOUSING
EXPERIENCE



2/3 RHK - KHARADI

www.lotus-court.com



Krishna Constructions -

Proudly present **LOTUS COURT** a luxurious
2 & 3 BHK housing complex, in the fast growing
corridor of **Kharadi**.

Strategically located at convenient distances from the important locales such as Koregaon Park, Kalyani Nagar, Kharadi - IT Hub & Viman Nagar which have transformed the skyline of Pune. A location to look forward from most prominent amenities such as the Airport-15 mins, Central Train and Bus Station - 20 mins, Schools, Hospitals, I T Hubs, Industrial Zones, Shopping Malls, Restaurants, Vegetable Markets, Super Stores, 5-Star Hotels and entertainment spots to relax and unwind during your free time.

Lotus Courts are proposed two towers of 16 storeys, each offering 2-3 BHK lifestyle apartments. Well planned out spaces by our award winning Architects, Planners, Structural Engineers, and Technical Teams offers premium spaces with a value for money approach for each apartment. All the apartments come with the most important add-on ingredient of a good home- abundant light and cross ventilation. Two levels for parking, a podium level, Podium + 14 proposed habitable floors and a common terrace floor, make the Lotus Court super structure. Feel super special with the finishes that intend to engulf you to make you most comfortable, all this at the residential landmark in the Kharadi vicinity. This will definitely be one of the best investments you will make in the years to come.

Play areas for children, a gymnasium, a multi -purpose hall centred by lots of greenery around it. A beautiful podium landscaped garden with a swimming pool, for senior citizens and children to utilise their energies in the right ambiance and manner awaits the residents at Lotus Court. If you strive to live in positive spaces, then Lotus Courts should be on your agenda, as we have created a new segment of conscious house buyers at Lotus Courts. When you buy a house at Lotus Court you are automatically upgraded to a life beyond your imagination.

Come and enjoy a 'Divine' housing experience at Lotus Courts. We have created homes where your heart will never want to leave.

AMENITIES

PODIUM LEVEL



Pool



Gymnasium



Kids Play Area



Jogging Track



Party Deck

GROUND LEVEL



Multipurpose hall



Basket Ball

Two level parking	100% power back up for common areas	Intercom
Fire detection and suppression system	Lifts - Passenger/Stretcher compatible	
Ground Entrance Lobby - Double height well designed and wheel chair friendly		
Solar lighting for common areas	Sewage treatment plant for recycling of water	
Separate water storage tank for kitchen use and sanitation purposes.		
Water harvesting system	Two Tier security system	

SPECIFICATIONS

STRUCTURE

Impact Resistant Structure



WALL FINISH

Gypsum plaster for internal walls | Sand Faced/ External walls.



SAFE AND STURDY DOORS

Decorative main entrance doors with Safety grill, Standard fittings and Name Plate.



WINDOWS

Heavy duty sliding windows with tinted glass and safety grills with mosquito net | Jamb in granite / marble.



FLOORING

Vitrified/ Ceramic tiles in complete flat



BATHROOMS

Provision for geyser | Solar water | Concealed plumbing | Ceramic/Vitrified on wall dado & flooring
Branded sanitary ware | Hot/Cold mixture for all shower areas | Glass partition



KITCHEN

Granite top kitchen platform | Stainless steel sink | Glazed tile dado upto window top |
Provision for exhaust fan | Water purifier provision | Separate water connection for washing machine



ELECTRIFICATION

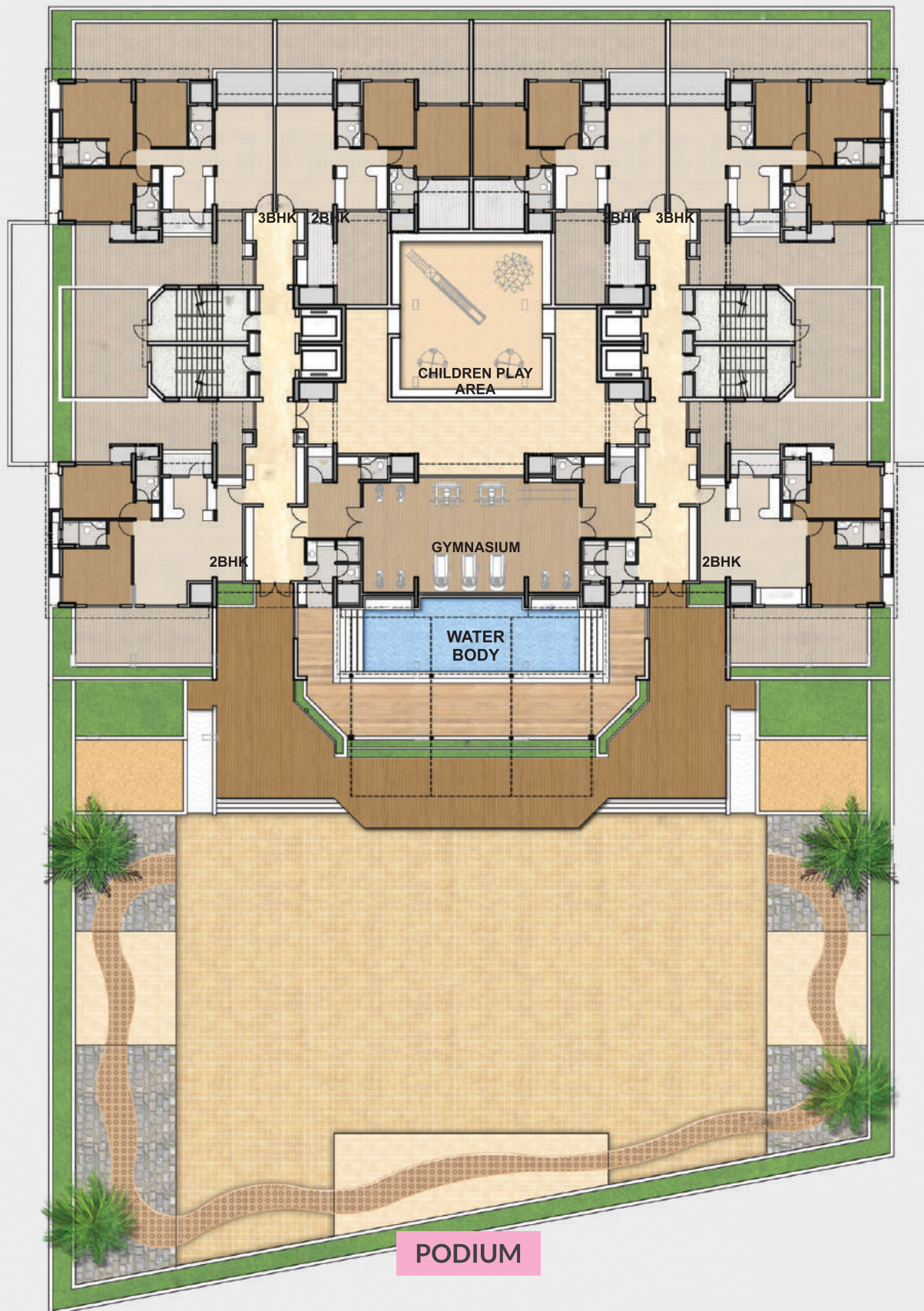
Concealed electrical wiring in complete flat | Fire resistant cabling |
Modular switch gear | Provision for inverter back up





LOTUSCOURT
Divine Housing Experience







KRISHNA CONSTRUCTIONS

Site Office:

Survey No. 28/1, Next to Kran Radar Factory,
Old Kharadi Mundhwa Bypass,
Kharadi, Pune - 14.

Email : lotuscourt.pune@gmail.com

Contact : 869 8100 051

Our Completed Projects :

Banyan Tree , Kharadi | Mira Condominiums , Mira residency at Kalyani nagar



MAHA RERA NO. P52100008752

<https://maharera.mahaonline.gov.in>



IGBC Green Homes



Note:

The Plans, Specifications, Amenities, Number of Flats, Number of Floors, Area & Photographs are only Indicative and can be subject to change at the sole discretion of the builders as per the sanctioned drawings from the statutory authorities, wherever applicable.